

PhonoDude

Tube Phono Amp
Passive RIAA

PCB Version
With 5575 / 5751

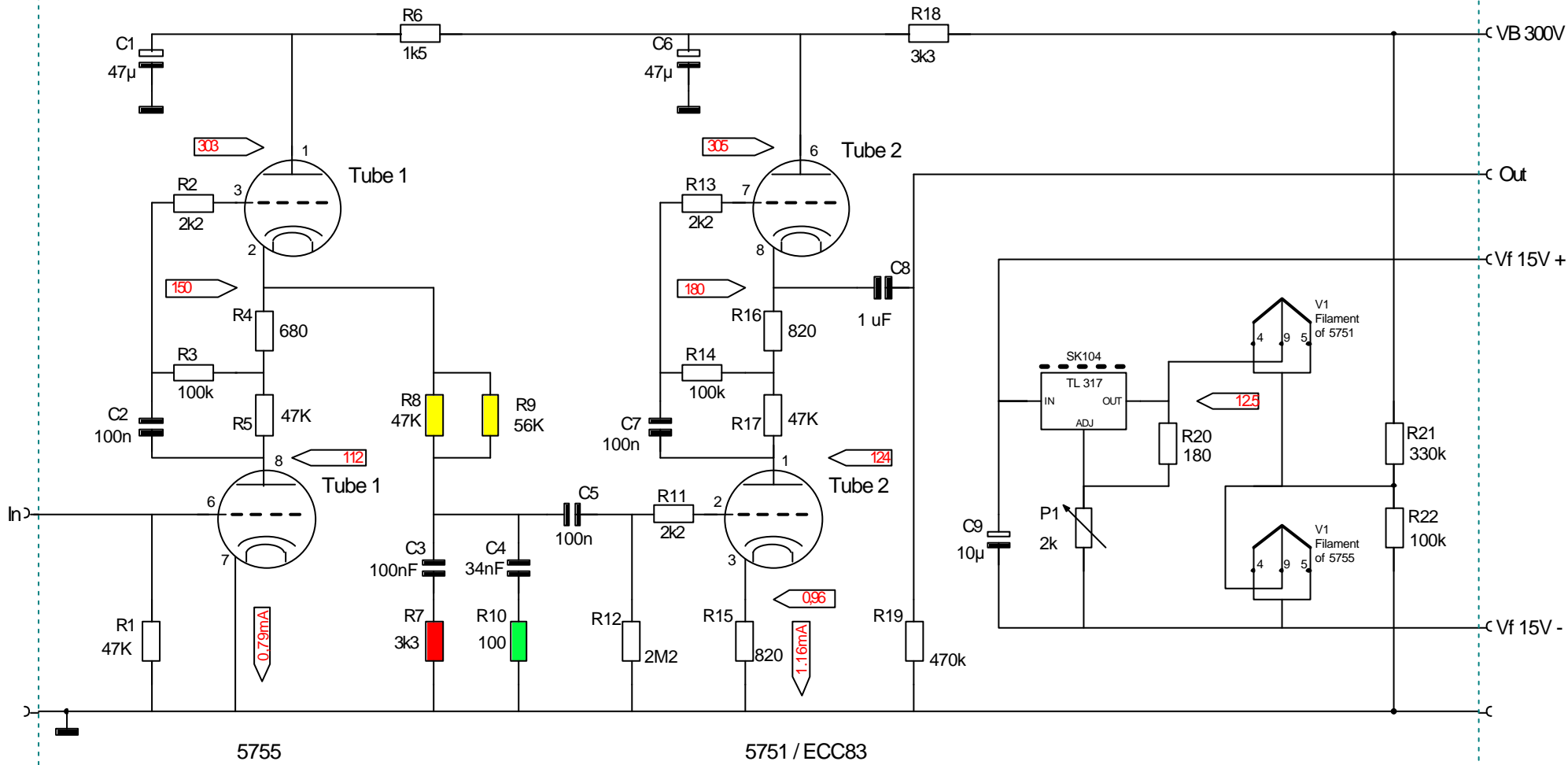
By Doede Douma / TriodeDick

PCB Version 4.0

Updated December 29th, 2003

<http://www.dddac.de/>

<http://www.triodedick.com/>



Important !! When an ECC83 is used as 2nd Tube, a 150 Ohm resistor must be placed between pin 4/5 and 9 !!

Only One Channel Shown. All parts are ON the PCB !!

All RED Values are actually measured values !!

Adjustment of the RIAA curve (all with 10Hz=0dB):

All Caps AuriCap

Yellow: 10 KHz = -33,4 dB

Green: 50 KHz = -44,5 dB

Red: 1 KHz = -20,0 dB

PhonoDude PCB version 4

Update: 29-12-2003

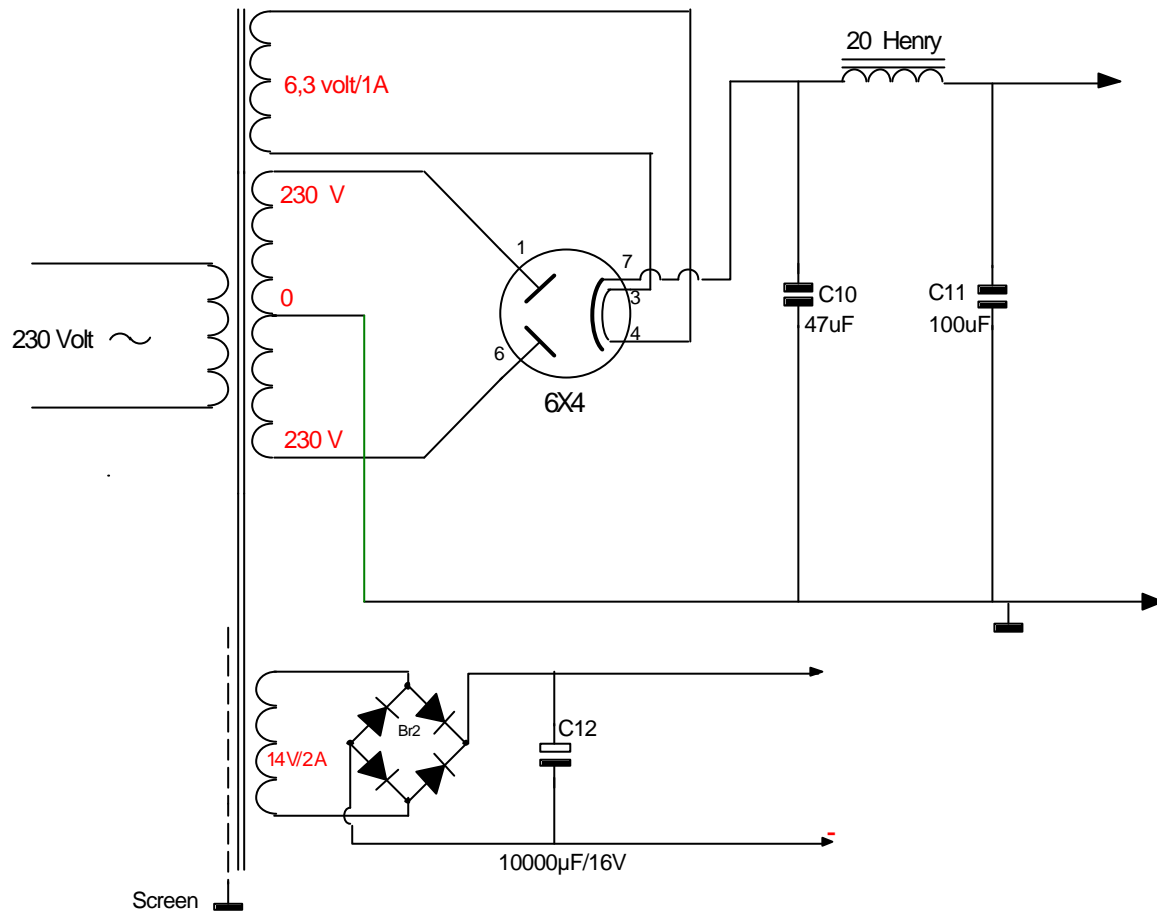
Author: Doede Douma

Revision: 1.0

Built:
YES

Design ready:
YES

Page: 1 # 2



This is part of the Power Supply used by Triode Dick
 Basically any Power supply of your choice will do
 The PhonoDude PCB needs:

15-18 Volt DC / 500mA
 300 Volt DC / 5mA

PhonoDude PCB Power Supply

Update: 29-12-2003

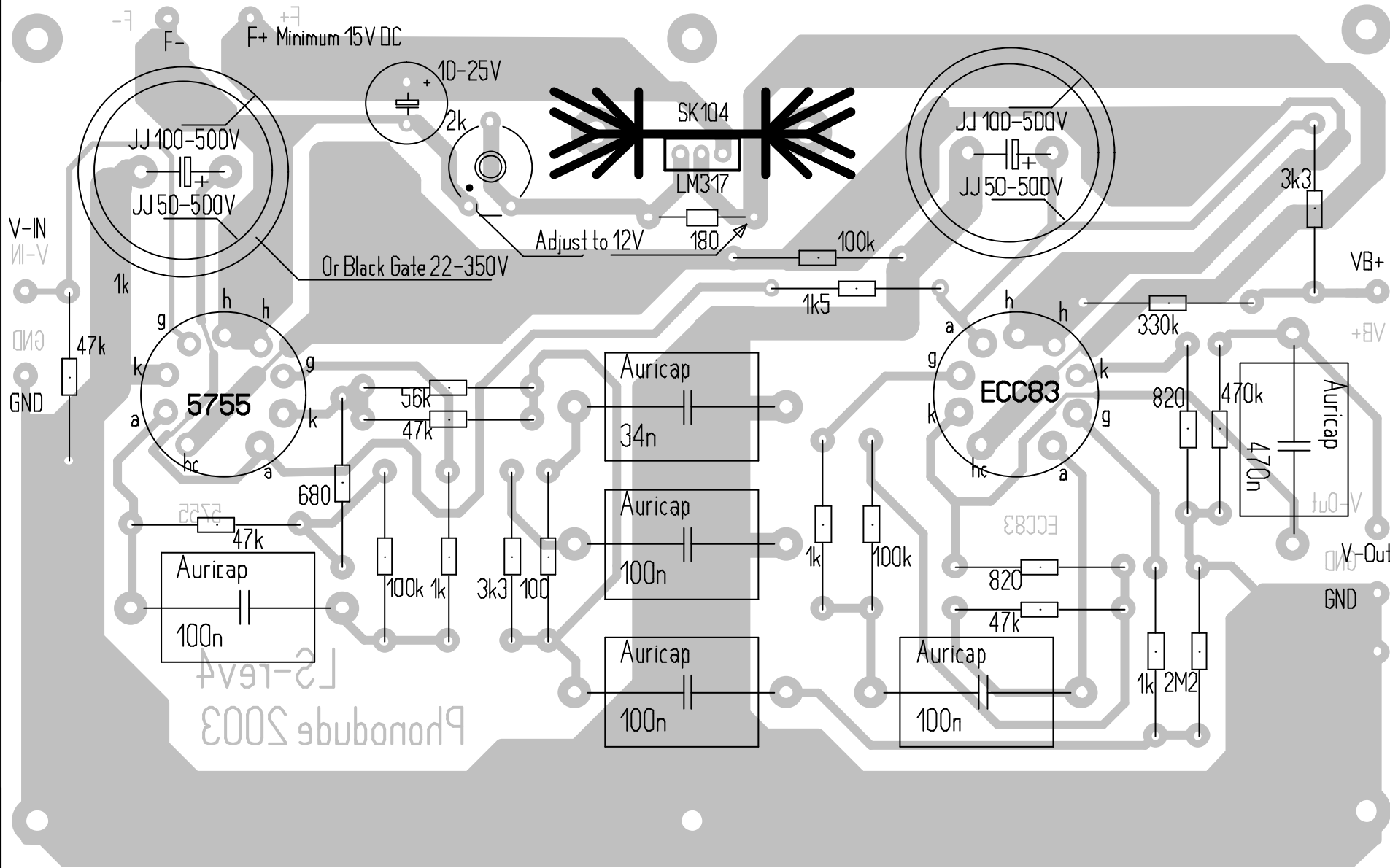
Author: Doede Douma

Revision: 1.0

Built:
XXX

Design ready:
XXX

Page: 2 # 2



Phonobude 2003
L2-lev4