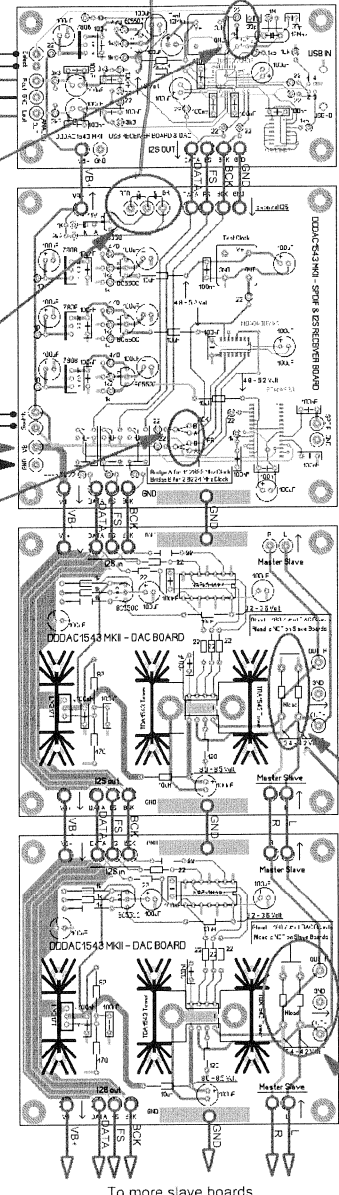
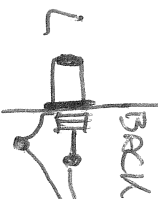


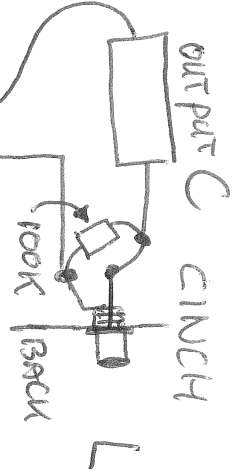
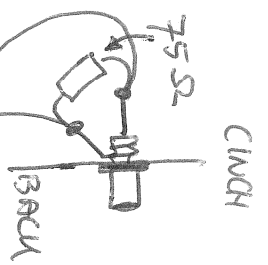
LED  
RED GREEN

FRONT

R  
CINCH  
IDEM  
2x

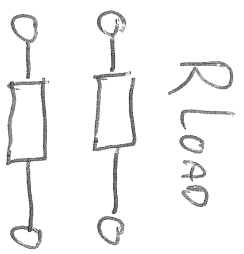


Typical SETUP for the DDDAC1543 MK2

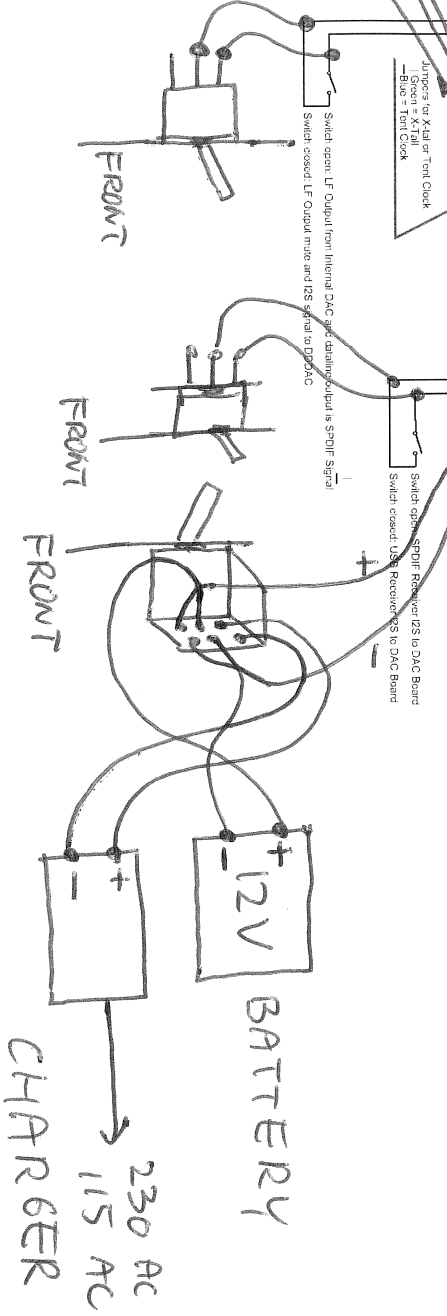


Resistor = 180 / # of DAC Boards  
Tripple Resistor for optimum DC Bus (2.95V)

DO NOT install R-load at the slave board



DAC MODULES	VALUE
1	180 Ω
2	90-100 Ω
3	60-68 Ω
4	47 Ω
5	39 Ω



Jumpers for X-tal or Tent Clock  
Green = XTAL  
Blue = Tent Clock

Switch: output LF Output from Internal DAC and external output is SPDIF Signal

Switch: output SPDIF Receiver (DS to DAC Board)  
Switch: output USB Receiver to DAC Board

Jumpers: Tent Clock Frequency select